

Steel City[®]

T&B Catalog Number: NC301
UPC Number: 78599142751
Description: 3/8" Connector, Clamp Type, Die Cast Zinc, Non-watertight. For use with Non-Metallic Sheathed Cable.
Status: Active

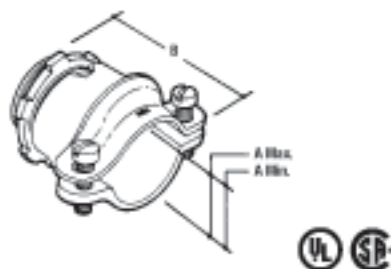
General	
Trade Size (inches)	3/8" (1/2" Knockout)
Material	Die Cast Zinc
Connection Type	Clamp
Dimension Information	
Diameter_B (inches)	1.16
A_Minimum (inches)	.18
A_Maximum (inches)	.64
Packaging	
T&B Order Multiple	100
T&B Inner Pack	100
Package in Units	1000
T&B Sold in UOM	Each
T&B Weight Per UOM	5.5 lbs. per 100
Certifications	
RoHS Compliance	Yes
Certifications	



File Nbr:
E 17583



NM Clamp Type Connector — Die Cast Zinc

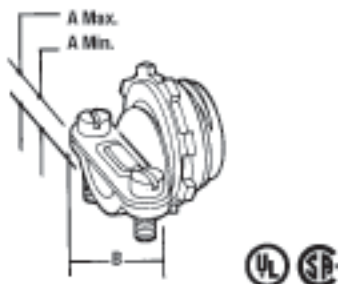


CAT. NO.	CONDUIT SIZE	DIMENSIONS (IN.)			STD. CTN.
		A (MIN.)	A (MAX.)	B	
NC-201	1/2"	0.40	0.95	1.87	250
NC-202	3/8"	0.50	1.10	1.84	200
NC-203	1"	0.62	1.14	2.00	100
NC-204	1 1/4"	0.50	1.38	2.28	100
NC-205	1 1/2"	0.75	1.61	2.49	50
NC-206	2"	0.90	2.04	3.35	50

CSA File No. LR-12798.

UL File No. E-17583.

Clamp Type Connector — Die Cast Zinc



CAT. NO.	CONDUIT SIZE	DIMENSIONS (IN.)			STD. CTN.
		A (MIN.)	A (MAX.)	B	
NC301	3/8" (1/2" KD)	0.18	0.64	1.16	1,000
NC-302	3/8"	0.41	0.82	1.87	500
NC-303	1"	0.34	0.94	2.01	250

CSA File No. LR-12798.

UL File No. E-17583.

Connectors Clamp Type, Non-Watertight — Die Cast Zinc

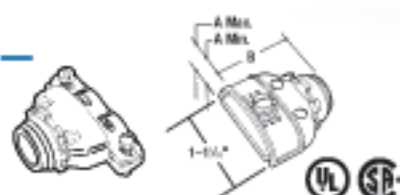


CAT. NO.	CONDUIT SIZE	DIMENSIONS (IN.)			STD. CTN.
		A (MIN.)	A (MAX.)	B	
NC041	1 1/4"	0.27	0.75	2.02	100
NC-051	1 1/2"	0.54	0.95	2.50	50
NC-061	2"	0.75	1.12	3.41	40

UL File No. E-15170 — 1 1/2"–1 1/2".

UL File No. E-17583 — 2".

Duplex Clamp Type Connector — Die Cast Zinc



CAT. NO.	CONDUIT SIZE	DIMENSIONS (IN.)			STD. CTN.
		A (MIN.)	A (MAX.)	B	
XC-210	1/2" (1/2" KD)	0.13	0.65	1.56	250
XC-211-SC	3/8"	0.24	0.63	1.59	200
XC-222-SC	3/8"	0.24	0.63	1.59	200

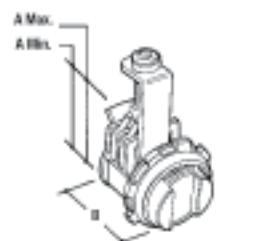
CONDUIT/CABLE	FMC	AC	MCC	MCI
Max. Size	1/2"	10/2	.565	.565
Min. Size	1/8"	14/2	.425	.425

CSA File No. LR-12798.

UL File No. E1303.

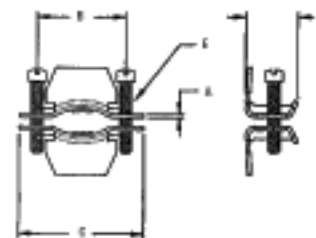
- For use with aluminum smooth extruded metal clad cable, (min. dia. .410) – (max. dia. .500).

NM Flex Connectors, Saddle Type — Die Cast Zinc



CAT. NO.	SIZE	DIMENSIONS (IN.)			STD. CTN.
		A (MIN.)	A (MAX.)	B	
XC-2200-C	1/2"	0.12	0.63	0.98	500

Tilt-In Connector Metallic Steel — Electro-Galvanized



CAT. NO.	CONDUIT SIZE	DIMENSIONS (IN.)					STD. CTN.
		A	B	C	D	E	
NC-850	1/2"	.050	.950	1.312	.650	8-32 x 1/2	1,000
NC-851	3/4"-1"	.050	1.250	1.750	.780	8-32 x 1	500
NC-852	1-1 1/8"	.062	1.625	2.125	.780	10-32 x 1	250
NC-853	1-1 1/2"	.062	1.970	2.500	.785	10-32 x 1 1/2	100